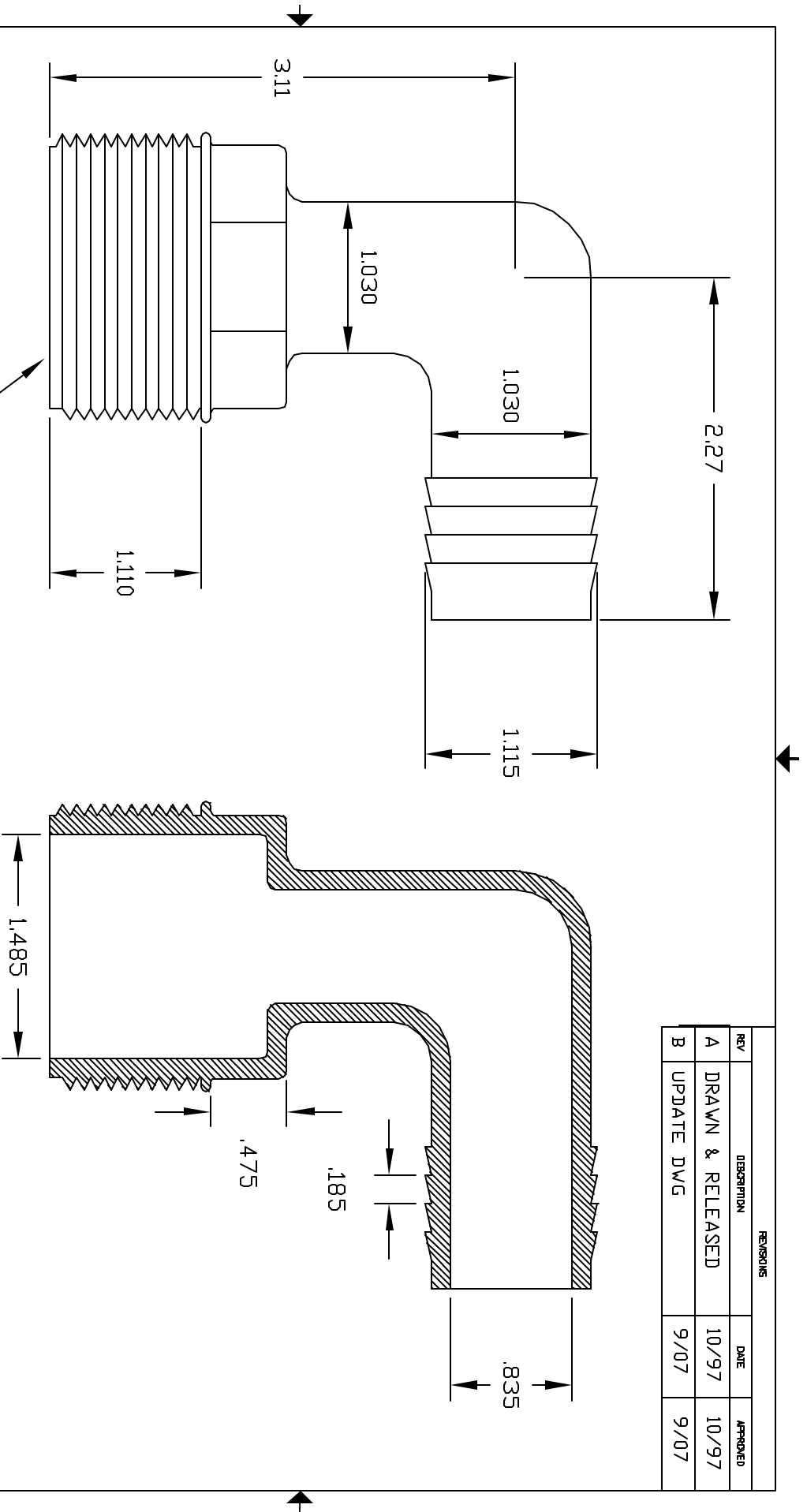


REVISIONS			
REV	DESCRIPTION	DATE	APPROVED
A	DRAWN & RELEASED	10/97	10/97
B	UPDATE DWG	9/07	9/07



CONTROLLED DOCUMENT
ONLY IF IN RED

1-1/2" NPT

THIS PRINT AND THE SPECIFICATIONS ARE THE PROPERTY OF THOGUS PRODUCTS COMPANY AND HAVE BEEN LENT WITH THE UNDERSTANDING THAT IT WILL BE RETURNED UPON REQUEST.

UNLESS OTHERWISE SPECIFIED DIMENSIONS ARE IN INCHES
TOLERANCES UNLESS OTHERWISE SPECIFIED
XX +/- .05
XXX +/- .015

DRAWN	NM	DATE	10/97
DESIGNED	202416N	MATERIAL	NYLON
Part Name:		1-1/2NPT X 1 BARB ELBOW	
Part Number:		TE202416/N	
THOGUS PRODUCTS		33490 PIN DAK PARKWAY AYDON LAKE OHIO 44012	
SHEET	1	of	1
REV	B		

ALL DIMENSIONS ARE TO CENTER UNLESS OTHERWISE SPECIFIED